

HYDRAULIC NUT-SPLITTERS



Full range of single acting Integral and external hydraulic nut-splitters

Specially designed to work on flanged pipework

Requires less hydraulic force than other nut-splitters and is more compact than other nut-splitters

NS12TE, NS15TE, NS20TE, NS35TE & NS50TE

External Hydraulic Nut-Splitters

NS12TI & NS15TI

Integral Hydraulic Nut-Splitters



Features & Benefits

1. Integrated steel shroud

- Protects the user from flying particles
- Increases tool strength in critical areas

2. Sharp cutting tip made from shock resisting steel

- Requires less hydraulic force to cut the nut
- Gives longer blade life

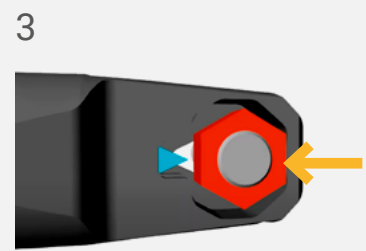
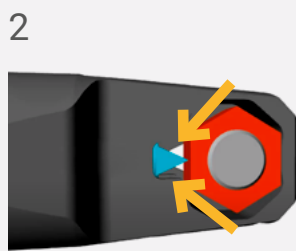
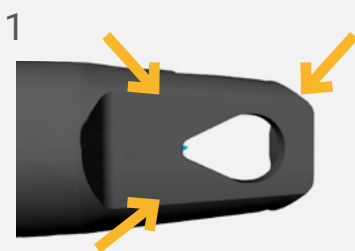
3. Convex reaction point

- Allows the nut to deform as the nut splits

The combination of integral shroud, sharp cutting tip & convex reaction point create a compact cutting head which allow the Nut-Splitters to be used in tight spaces such as WELD NECK flanges

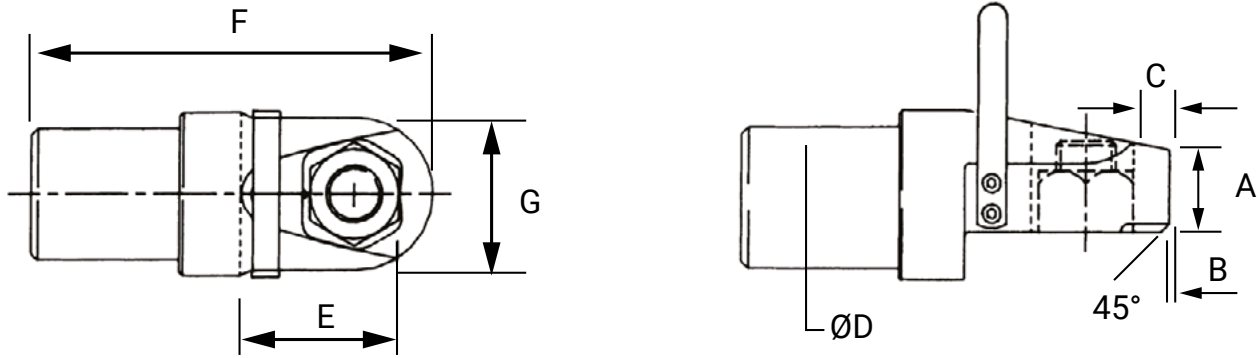
Special Features

- Integral Hydraulic Pump
- Ideal for working at heights or subsea applications
- No need for hoses, separate hand-pumps or couplings
- Optimised Cutting head geometry
- Heat-Treated Shock Resistant Tool Steel Cutting Tip
- Quick and easy Cutting Tip replacement
- Integrated steel shroud encloses cutting zone protecting against flying particles
- Drop-tested revolving anchor point
- High-strength safety bond



» FAST - SAFE - SIMPLE - COST EFFECTIVE **JOB DONE**

HYDRAULIC NUT-SPLITTERS



Datasheet

Part No.	Cutting Head	Hydraulic Cylinder	Bolt Size	Unit of Measure	Nut Size - A/F	A	B	C	D	E	F	G	Wt
M0201A0000XX	No.1 Head Assembly 3/4" Max Stud	Covers No1 - No4 Cutting Heads *M0202B0000XX	3/4" (M20)	Std. - in.	1-1/4	1.61	0.16	0.55	3.00	2.20	8.27	2.52	13.2 lbs
	Metric - mm			30	41	4	14	76	56	213	64	6 kg	
M0201B0000XX	No.2 Head Assembly 7/8" Max Stud		3/4" - 7/8" (M20-M22)	Std. - in.	1-1/4 - 17/16	1.61	0.16	0.59	3.00	2.36	8.58	2.60	13.6 lbs
	Metric - mm			30 - 32	41	4	15	76	60	218	66	6.2 kg	
M0201C0000XX	No.3 Head Assembly 1" Max Stud	7/8" - 1" (M22-M24)	Std. - in.	1-7/16 - 1-5/8	1.61	0.16	0.63	3.00	2.56	8.78	2.91	14.3 lbs	
	Metric - mm		32 - 36	41	4	16	76	65	223	74	6.5 kg		
M0201D0000XX	No.4 Head Assembly 1.1/8" Max Stud	1" - 1-1/8" (M24-M27)	Std. - in.	1-5/8 - 1-13/16	1.61	0.16	0.73	3.0	2.95	9.09	3.15	15.4 lbs	
	Metric - mm		36 - 41	41	4	18.5	76	75	231	80	7 kg		
M0201E0000XX	No.5 Head Assembly 1.1/4" Max Stud	Covers No5 - No9 Cutting Heads *M0202A0000XX	1-1/8" - 1-1/4" (M27-M33)	Std. - in.	1-13/16 - 2	2.20	0.24	0.77	3.74	4.05	10.86	3.39	17.6 lbs
	Metric - mm			41 - 50	56	6	19.5	95	103	276	86	8 kg	
M0201F0000XX	No.6 Head Assembly 1.3/8" Max Stud		1-1/4" - 1-3/8" (M33-M36)	Std. - in.	2 - 2-3/16	2.20	0.24	0.83	3.74	4.25	11.10	3.62	19.8 lbs
	Metric - mm			50 - 55	56	6	21	95	108	282	92	9 kg	
M0201G0000XX	No.7 Head Assembly 1.1/2" Max Stud	1-3/8" - 1-1/2" (M36-M39)	Std. - in.	2-3/16 - 2-3/8	2.20	0.24	0.88	3.74	4.37	11.30	4.01	24.2 lbs	
	Metric - mm		55 - 60	56	6	22.5	95	111	287	102	11 kg		
M0201H0000XX	No.8 Head Assembly 1.5/8" Max Stud	1-1/2" - 1-5/8" (M39-M42)	Std. - in.	2-3/8 - 2-9/16	2.20	0.24	0.94	3.74	4.53	11.57	4.33	30.8 lbs	
	Metric - mm		60 - 65	56	6	24	95	115	294	110	14 kg		
M0201J0000XX	No.9 Head Assembly 1.3/4" Max Stud	1-5/8" - 1-3/4" (M42-M45)	Std. - in.	2-9/16 - 2-3/4	2.20	0.24	1.00	3.74	4.80	11.81	4.49	41.8 lbs	
	Metric - mm		65 - 70	56	6	25.5	95	122	300	114	19 kg		
M0201K0000XX	No.10 Head Assembly 1.7/8" Max Stud	Covers No10 - No14 Cutting Heads *M0202C0000XX	1-3/4" - 1-7/8" (M45-M48)	Std. - in.	2-3/4 - 2-15/16	3.07	0.31	1.06	5.63	5.39	14.72	4.88	56.2 lbs
	Metric - mm			70 - 75	78	8	27	143	137	374	124	25.5 kg	
M0201M0000XX	No.11 Head Assembly 2" Max Stud		1-7/8" - 2" (M48-M52)	Std. - in.	2-15/16 - 3-1/8	3.07	0.31	1.14	5.63	5.55	14.88	5.16	70.5 lbs
	Metric - mm			75 - 80	78	8	29	143	141	378	131	32 kg	
M0201N0000XX	No.12 Head Assembly 2.1/4" Max Stud	2" - 2-1/4" (M52-M56)	Std. - in.	3-1/8 - 3-1/2	3.07	0.31	1.20	5.63	5.90	15.35	5.67	87.1 lbs	
	Metric - mm		80 - 85	78	8	30.5	143	150	390	144	39.5 kg		
M0201P0000XX	No.13 Head Assembly 2.1/2" Max Stud	2-1/4" - 2-1/2" (M56-M64)	Std. - in.	3-1/2 - 3-7/8	3.07	0.31	1.24	5.63	6.30	15.79	6.22	103.6 lbs	
	Metric - mm		85 - 95	78	8	31.5	143	160	401	158	47 kg		
M0201R0000XX	No.14 Head Assembly 2.3/4" Max Stud	2-1/2" - 2-3/4" (M64-M72)	Std. - in.	3-7/8 - 4-1/4	3.07	0.31	1.30	5.63	6.65	16.22	6.69	122.3 lbs	
	Metric - mm		95 - 105	78	8	33	143	169	412	170	55.5 kg		
M0201S0000XX	No.15 Head Assembly 3" Max Stud	2-3/4" - 3" (M72-M76)	Std. - in.	4-1/4 - 4-5/8	4.29	0.40	1.55	6.93	7.64	19.56	7.56	141.1 lbs	
	Metric - mm		105 - 110	109	10	39.5	176	194	497	192	64 kg		
M0201T0000XX	No.16 Head Assembly 3.1/4" Max Stud	3" - 3-1/4" (M76-M80)	Std. - in.	4-5/8 - 5	4.29	0.40	1.61	6.93	8.03	20.00	7.99	160.9 lbs	
	Metric - mm		110 - 120	109	10	41	176	204	508	203	73 kg		
M0201U0000XX	No.17 Head Assembly 3.1/2" Max Stud	3-1/4" - 3-1/2" (M80-M90)	Std. - in.	5 - 5-3/8	4.29	0.40	1.67	6.93	8.35	20.39	8.50	182.9 lbs	
	Metric - mm		120 - 130	109	10	42.5	176	212	518	216	83 kg		

* Select required cutting heads along with appropriate hydraulic cylinder for complete tool assemblies